



WIN DEPOT
RESTAURANT EQUIPMENT CENTER

MONTHLY SALE

MARCH 1ST - MARCH 31ST 2020

SMALLWARE

15% OFF



Pizza Screen

WINCO. Round,
Seamless, Aluminum

APZS-10 (W2U515) 10" dia.

~~\$2.76~~ Now: **\$2.35**

APZS-11 (W2V148) 11" dia.

~~\$2.63~~ Now: **\$2.24**

APZS-12 (W2V149) 12" dia.

~~\$2.88~~ Now: **\$2.45**

APZS-13 (W2T934) 13" dia.

~~\$3.27~~ Now: **\$2.78**

APZS-14 (W2V150) 14" dia.

~~\$3.67~~ Now: **\$3.12**

APZS-15 (W2V151) 15" dia.

~~\$3.92~~ Now: **\$3.33**

APZS-16 (W2V152) 16" dia.

~~\$4.53~~ Now: **\$3.85**

APZS-17 (W2T936) 17" dia.

~~\$4.58~~ Now: **\$3.89**

APZS-18 (W2V153) 18" dia.

~~\$4.60~~ Now: **\$3.91**

APZS-19 (W2V154) 19" dia.

~~\$4.86~~ Now: **\$4.13**

APZS-20 (W2V155) 20" dia.

~~\$5.29~~ Now: **\$4.50**

THUNDER. Round,
Seamless, Aluminum

ALPZ22 (W1S593) 22" dia.

~~\$8.05~~ Now: **\$6.84**



Pizza Peel

OMCAN. Wooden

80607 (W2W350) 16" x 18" Blade, 42" Overall

~~\$15.44~~ Now: **\$13.10**

80605 (W2W348) 14" x 16" Blade, 36" Overall

~~\$14.18~~ Now: **\$12.05**

80603 (W2W346) 14" x 16" Blade, 24" Overall

~~\$12.18~~ Now: **\$10.35**

80602 (W2W345) 12" x 14" Blade, 42" Overall

~~\$12.80~~ Now: **\$10.88**

80608 (W2W351) 18" x 18" Blade, 42" Overall

~~\$15.64~~ Now: **\$13.29**

80609 (W2W352) 20" x 22" Blade, 42" Overall

~~\$22.84~~ Now: **\$19.39**

Sicilian Style Pizza Pan

WINCO. Steel

SPP-1218 (W2R918) 12" x 18" x 1"

~~\$23.15~~ Now: **\$19.68**

SPP-1616 (W2R919) 16" x 16" x 1"

~~\$27.48~~ Now: **\$23.36**



Pizza Tray

WINCO. Round,
Wide Rim, Aluminum

APZT-8 (W2V063) 8" dia.

~~\$2.25~~ Now: **\$1.91**

APZT-9 (W2V087) 9" dia.

~~\$2.49~~ Now: **\$2.12**

APZT-10 (W2V064) 10" dia.

~~\$2.63~~ Now: **\$2.24**

APZT-11 (W2V088) 11" dia.

~~\$3.05~~ Now: **\$2.59**

APZT-12 (W2A651) 12" dia.

~~\$3.67~~ Now: **\$3.12**

APZT-14 (W2V150) 14" dia.

~~\$3.98~~ Now: **\$3.39**

APZT-16 (W2V090) 16" dia.

~~\$5.18~~ Now: **\$4.40**

APZT-17 (W2T935) 17" dia.

~~\$5.55~~ Now: **\$4.72**

APZT-18 (W2V091) 18" dia.

~~\$6.17~~ Now: **\$5.24**

APZT-19 (W2V092) 19" dia.

~~\$6.54~~ Now: **\$5.53**

APZT-20 (W2V093) 20" dia.

~~\$6.59~~ Now: **\$5.60**

THUNDER. Round,
Wide Rim, Aluminum

ALPTWR022 (W2D368) 22" dia.

~~\$13.11~~ Now: **\$11.14**





WIN DEPOT
RESTAURANT EQUIPMENT CENTER

MONTHLY SALE

MARCH 1ST - MARCH 31ST 2020

SMALLWARE

12% OFF



Utility Cart

QUANTUM (3) Shelves,
34-1/4"W x 17-1/2"D x 32-1/
PC3518-33-3 (W2Y238)
~~\$184.88~~ Now: **\$162.69**
WINCO. Chrome Plated Wire
VCCD-2448B (W2X989) 24" x 48"
~~\$161.98~~ Now: **\$142.54**
VCCD-1836B (W2X988) 18" x 36"
~~\$133.91~~ Now: **\$117.84**



Syrup Dispenser

TABLECRAFT. 10oz,
Plastic, Transparent, Chrome P
PP10 (W2S212)
~~\$9.36~~ Now: **\$8.68**

15% OFF



Chef's Timer & Stopwatch

TAYLOR. 3/8" LCD Display
5816N (W2X953)
~~\$10.70~~ Now: **\$9.10**



Better Burger Collection™ Fry Tray

TABLECRAFT. 7-1/2"x5", 18oz
20009 (W2V607)
~~\$10.58~~ Now: **\$8.99**



Portion Control Scale

TAYLOR. Digital, 2 lb x .01 oz., Compact
TE32FT (W2X958)
~~\$66.25~~ Now: **\$56.31**



Cooking Thermometer & Timer

TAYLOR. Digital, 32° to 392°F
1470FS (W2X966)
~~\$17.51~~ Now: **\$14.88**



Napkin Dispenser

TABLECRAFT. 4-3/4" x 3-7/8" x 7-1/2"
2212 (W2Q791)
~~\$8.65~~ Now: **\$7.35**



Taco Taxi

TABLECRAFT. Holds 2-3,
7" x 2-1/4" x 1-5/8", Black
10278BK (W2Y161)
~~\$4.50~~ Now: **\$3.83**



Thermometer

TAYLOR. Digital, Folding Probe,
-40° to 250°F
1476FDA (W2X948)
~~\$11.86~~ Now: **\$10.08**



**Infrared & Thermo-
couple Thermometer**

TAYLOR. Dual Temp, 4" f
9305 (W2X952)
~~\$62.37~~ Now: **\$53.01**



Coffee Carafe

TABLECRAFT. 34 oz.,
Thumb Press Black Plastic Lid
10297 (W2Y163)
~~\$19.98~~ Now: **\$16.98**

42-38 Northern Blvd., Long Island City, NY 11101
Tel: (718) 433-1999 Fax: (718) 433-0700

318 Lafayette Street, New York, NY 10012
Tel: (212) 431-1998 Fax: (212) 966-3333

Email: info@winsupply.com
Website: www.winsupply.com

Offer cannot be combined with other promotions, discounts, memberships etc; Offer valid while item is in stock; Exclusion items apply, please inquire at store





WIN DEPOT
RESTAURANT EQUIPMENT CENTER

MONTHLY SALE

MARCH 1ST - MARCH 31ST 2020

SMALLWARE



Tasting Flight

TABLECRAFT. Black Metal,
Holds 3 Glasses/Ramekins
WF200BK (W2Y154)
~~\$41.88~~ Now: **\$10.10**



Triple Fish Basket

CHEF MASTER. 20-2/5"Lx11"W,
Non-Stick, Wood Handle
06623Y (W2V475)
~~\$12.97~~ Now: **\$11.02**



Commercial Can Opener

CHEF MASTER. Commercial
Can Opener, Red Handle
90226 (W2V482)
~~\$10.13~~ Now: **\$8.61**



Food Carrier

WINCO. Full Size. Gray
IFT-1 (W2X986) Single
~~\$280.60~~ Now: **\$252.54**
IFT-2 (W2X987) Double
~~\$628.19~~ Now: **\$565.37**



Tray

WINCO. Non-Slip,
Fiberglass, Round
TFG-11K (W2V018) 11" Black
TFG-11N (W2V019) 11" Brown
~~\$5.85~~ Now: **\$4.97**
TFG-14K (W2T945) 14" Black
TFG-14N (W2V020) 14" Brown
~~\$6.04~~ Now: **\$5.11**
TFG-16K (W2V022) 16" Black
TFG-16N (W2V021) 16" Brown
~~\$8.28~~ Now: **\$7.04**
TFG-2622K (W2T946)
26"x22" Oval, Black
~~\$21.96~~ Now: **\$18.67**



Fryer Crumber

CHEF MASTER. Comfort Handle
90222 (W2V479)
~~\$14.98~~ Now: **\$12.73**



Rabbit® Ah

So! Cork Remover,
2 Prong Cork Lifter
W6111N (W2X971)
~~\$13.00~~ Now: **\$11.05**

Rabbit® Wine Opener

Handheld, Lever Style
W6004N (W2X975)
~~\$30.83~~ Now: **\$26.21**



Rabbit® Waiter's Corkscrew

2-Step, Black Finish
W5614N (W2X973)
~~\$8.93~~ Now: **\$7.59**



Timer

CHEF MASTER. Digital Display,
4 Channel, Memory Recall
90218 (W2V939)
~~\$33.35~~ Now: **\$28.35**

Oil & Vinegar Bottle

TABLECRAFT. 17 oz.,
Dark Green
10376 (W2Y159)
~~\$5.66~~ Now: **\$4.81**



Wine Bottle Stopper

TAYLOR. Set of 2
R3-15701FS (W2X977)
~~\$3.20~~ Now: **\$2.72**





Dopaco Impact Paper Cold Cup

- (cs/1200pcs)
- D16CCIMP (W2X913) \$75.95**
- 16 oz Tall
- D12SCCIMP (W2X912) \$62.95**
- 12 oz Squat



Dopaco Cold Cup Lids

- 12-22 oz (cs/2400pcs)
- DFL122Z (W2X915) \$ 87.95**



Paper Food Container & Lid

- Symphony (cs/250pcs)
- KHB16A-J8000 (W2X687) 16oz \$45.95**
- KHB12A-J8000 (W2X686) 12oz \$44.95**
- White (cs/250pcs)
- KHB8A-2050 (W2X666) 8oz \$42.95**



Pizza Box

- White, Corrugated, (cs/50pcs)
- 4915 (W2X858) 18" \$26.95**
- 4913 (W2X857) 16" \$20.95**
- 4912 (W2X856) 14" \$17.95**
- 4911 (W2X855) 12" \$15.95**
- 4910 (W2X854) 10" \$12.50**
- Clay Stock Print (cs/50pcs)
- 7018SP (W2X853) 18" \$28.95**
- Clay Stock Print (cs/100pcs)
- 7016SP (W2X852) 16" \$34.95**
- 7014SP (W2X851) 14" \$29.95**
- 7012SP (W2X850) 12" \$17.95**
- 7010SP (W2X849) 10" \$13.50**



Beverage Carrier

- SQP. 4 Cup, Fiber (cs/300pcs)
- M510032 (W2Y168) \$22.95**



Dart Conex

- Tall Translucent Cups (cs/1000pcs)
- Y16T (W2X584) 16oz \$36.95**
- Tall Translucent Cups (cs/2500pcs)
- Y9 (W2X580) 9oz \$57.95**



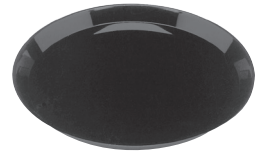
Stakmate Clear Dome Lids

- Round (cs/25pcs)
- LHP18STAK (W2X560) 18" \$34.95**
- LHP16STAK (W2X559) 16" \$27.95**
- LH14STAK (W2X558) 14" \$24.95**
- LHP12STAK (W2X557) 12" \$17.95**



Stakmate Black Trays

- Round (cs/25pcs)
- STAK18RB (W2X556) 18" \$43.95**
- STAK16RB (W2X555) 16" \$34.95**
- STAK14RB (W2X554) 14" \$33.95**
- STAK26RB (W2X553) 12" \$35.95**
- 6 section
- STAK12RB (W2X552) 12" \$23.95**



Ecopax Hinged Container

- Ivory, 6x6x3 (cs/250pcs)
- PP225 (W2X700) \$24.95**
- White, 9x8x3, 3 Section (cs/150pcs)
- PP993 (W2X698) \$34.95**



Silver Scalloped

- 14"x21" Cake Boards (cs/50pcs)
- RTS-1421 (W2X596) \$41.95**
- 14" Cake Circles (cs/50pcs)
- RSS-14" (W2X593) \$29.95**
- 10" Cake Circles (cs/100pcs)
- RSS-10" (W2X591) \$43.95**





WIN DEPOT
RESTAURANT EQUIPMENT CENTER

MONTHLY SALE

MARCH 1ST - MARCH 31ST 2020

EQUIPMENT

\$699



(43086) Fryer

**CE-CN-UR-CF15-NG
(W2X246)**

Countertop, natural gas, 11"W x 33"D x 30"H, (2) burners, (1) fryer basket, 15 lb capacity, thermostat control valve & pilot burner, stainless steel construction, (4) adjustable legs, 26,500 BTU, cETLus, ETL-Sanitation

\$799



Cooking™ Fryer

CP-F5-NAT (W2V952)

Natural gas, 21"W, floor model, 75-80 lb. capacity, (5) 30,000 BTU tube fired burners, millivolt thermostat, temperature range 200°F to 400°F, (2) nickel-plated baskets, basket hanger, stainless steel front, door & fry tank, 1-1/4" diameter full port drain, 2" diameter adjustable legs, 150,000 BTU, CSA Flame, CSA, CSA Star

\$965



Fryer

CBF-70 (W2V962)

Gas, floor model, full pot, 70 lb. fat capacity, (5) tubes, cast iron vertical burners, thermostatically controlled, millivolt control valve, (2) twin baskets, hanger plate, stainless steel front & galvanized sides, casters, 1/2" NPT rear gas connection, 150,000 BTU, cETLus, ETL-Sanitation

\$659



(41882) Pasta Cooker

**CE-CN-0004-P
(W2W908)**

Electric, countertop, 2.37 gal (9 L) single tank, sliding front door for water refill and waste outlet, (4) 3.5" x 6" pasta strainer/baskets with coated handles, stainless steel construction, non-slip feet, 240v/60/1-ph, 3.6 kW, cord with NEMA 6-20, Locally QPS Approved.

\$699



Cooking™ Charbroiler

CP-CB48-M (W2X036)

Natural gas, 48"W, (4) "U" shaped 35,000 BTU burners, 48"W x 20"D cooking area, adjustable manual controls every 12", 3-position cast iron grates, cool-to-the-touch stainless steel front edge, radiants, sides & rear splash guards, removable crumb tray, stainless steel construction, adjustable legs with non-skid feet, 140,000 BTU, CSA Flame, CSA, CSA Star (ships with LP conversion kit)

\$399



Food Warmer Display Case

**FWD2-180 (W2W826), FWD2-18B (W2P637)
FWD2-18G (W2X638), FWD2-18R (W2P638)**

18-1/2"W x 14-3/8"D x 17-1/2"H, (2) shelves with (3) stainless steel pans per shelf, curved front glass, tempered glass, (2) sliding rear glass doors, LED lighting, thermostat controlled, 304 stainless steel tubular heating element, stainless steel base, orange, red, blue or gray & anodized aluminum exterior, 120v/60/1-ph, 250 watts, cULus, UL-Sanitation

\$465



Conveyor Toaster

**CE-CN-0254-T
(W2X621)**

Horizontal, 2" opening, variable speed control, adjustable top & bottom heat controls, stainless steel body, 1.8kW, 120v/60/1-ph, 15 amps, cord, NEMA 5-20P, CE, cETLus.

\$1799



Metal Supreme Rotisserie Oven

FRG6VE (W2W545)

Natural gas, (6) stainless steel spits, (30) chicken capacity, (30) chickens/hr average productivity, tempered-glass sliding doors, stainless steel front, sides & interior cavity, aluminum top & back, adjustable feet, 90,000 BTU, 110v/50/60/1-ph, 9.5 amps

\$295



Citrus Juicer

ES4EA (W2W179)

Citrus Juicer, electric, heavy-duty, 50 L/hr production average, includes 34oz. container, strainer, & (2) citrus cones, stainless steel body, 1750 rpm, 1/2 HP, 120v/60/1-ph, 4.8 amps, 300 watts, NEMA 5-15P, ETL, ETL-Sanitation

42-38 Northern Blvd., Long Island City, NY 11101
Tel: (718) 433-1999 Fax: (718) 433-0700

318 Lafayette Street, New York, NY 10012
Tel: (212) 431-1998 Fax: (212) 966-3333

Email: info@winsupply.com
Website: www.winsupply.com

Offer cannot be combined with other promotions, discounts, memberships etc; Offer valid while item is in stock; Exclusion items apply, please inquire at store

